

Elizabeth Hubbard Property



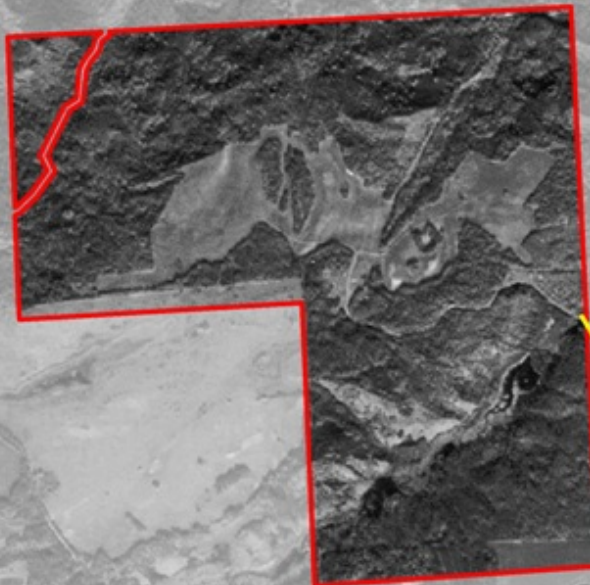
300 150 0 300 Metres
900 450 0 900 Feet
Original Map Scale: 1:20,000

Directions from Regina

1. Take Hwy 1 east to the town of Whitewood.
2. Turn north about 10 kilometers east of the town to the grid road.
3. Follow the main grid as it curves east and then north for 25 kilometers.
4. Turn west and travel about 1.6 kilometers (1 mile).
5. Turn north and the access to the property will be 800 meters away.

Legend

- External Property Boundary
- Highways
- Secondary Roads
- Driving Route



Disclaimer: This map is illustrative only. Do not rely on it as being a precise indicator of privately-owned land, routes, locations of features, nor as a guide to navigation. This map may contain omissions or errors.

60cm Orthorectified Aerial Imagery
Imagery © 2011 Saskatchewan Geospatial Imagery Collaborative, Saskatoon, Saskatchewan, Canada
Date of Imagery: 2010
Projection: NAD83 UTM Zone 13N
© The Nature Conservancy of Canada. 25-February-2013