

Backus Woods

Closest town/city

Woodstock, ON (approximately 70 kilometres)

Contact

1-866-249-9598

ontario@natureconservancy.ca

Seasons

accessible year-round



Property description

Comprising less than one per cent of the country's land mass, Carolinian Canada is home to 25 per cent of the country's population and provides habitat for nearly 25 per cent of its endangered species.

While here, take in the older-growth Carolinian forest and see a variety of unique Carolinian species, including prothonotary and cerulean warbler, tulip tree and black gum.

Amenities

cell service, interpretive signage, parking

Points of interest

boardwalks, bridges, fall colours, hemlock ravine, silver maple swamp, sugar shack

What to bring

binoculars, bug spray, camera, hat, sunscreen, water

Safety alerts

Potential flooding (February to May) along the northern 1.1 kilometres of floodplain trail. Due to the presence of ticks, wear long sleeves, long pants and light-coloured clothing.

Directions

1. From Woodstock, drive east on Highway 401 and take exit 232 for Norwich Avenue toward Oxford Road 59 Woodstock.
2. Drive south on County Road 59.
3. Turn right onto Salford Road/County Road 46.
4. Turn left onto Oxford Road 13/Regional Road 13.
5. Turn left onto Main Street East/Otterville Road/County Road 19.
6. Turn right onto Oxford Road 13/West Street South/Regional Road 13 and follow Regional Road 13.
7. Continue onto Norfolk County Highway 59.
8. Turn left onto Norfolk County Highway 24. The Backus Woods north parking lot is on the right. It's easy to miss, so drive slowly and keep an eye out.

Before visiting any Nature Destinations property, please check naturedestinations.ca for the most up-to-date access information.

Trails

Weston Family Trail

Type: linear

Difficulty: moderate

Round-trip distance: 6.5 kilometres

Surface: gravel

Four Oaks Trail

Type: linear

Difficulty: moderate

Round-trip distance: 3.6 kilometres

Surface: earthen

Wetland Trail

Type: linear

Difficulty: moderate

Round-trip distance: 4.2 kilometres

Surface: earthen

Dogwood Trail

Type: loop

Difficulty: moderate

Round-trip distance: 3.1 kilometres

Surface: earthen

Sassafrass Trail

Type: loop

Difficulty: moderate

Round-trip distance: 3.2 kilometres

Surface: earthen

Sugarbush Trail

Type: linear, loop

Difficulty: moderate to difficult

Round-trip distance: 2.3 kilometres

Surface: earthen

Floodplain Trail

Type: linear

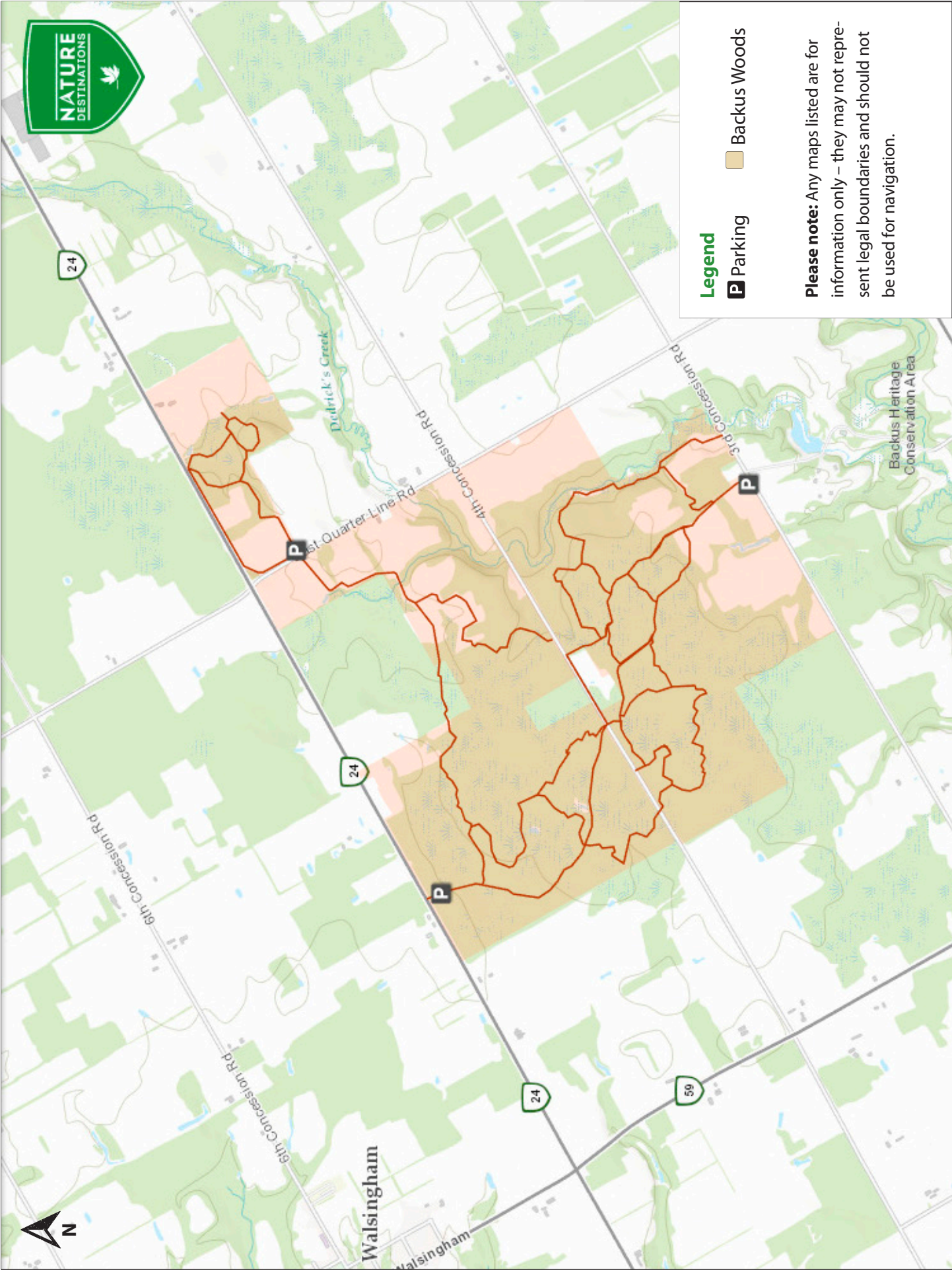
Difficulty: moderate

Round-trip distance: 2.8 kilometres

Surface: earthen

Species to spot

- black gum
- black oak
- blue-spotted salamander
- button bush
- hooded warbler
- pileated woodpecker
- red oak
- red-eyed vireo
- swamp white oak
- tulip tree
- white oak
- wild turkey
- woodland vole



Legend



Please note: Any maps listed are for information only – they may not represent legal boundaries and should not be used for navigation.